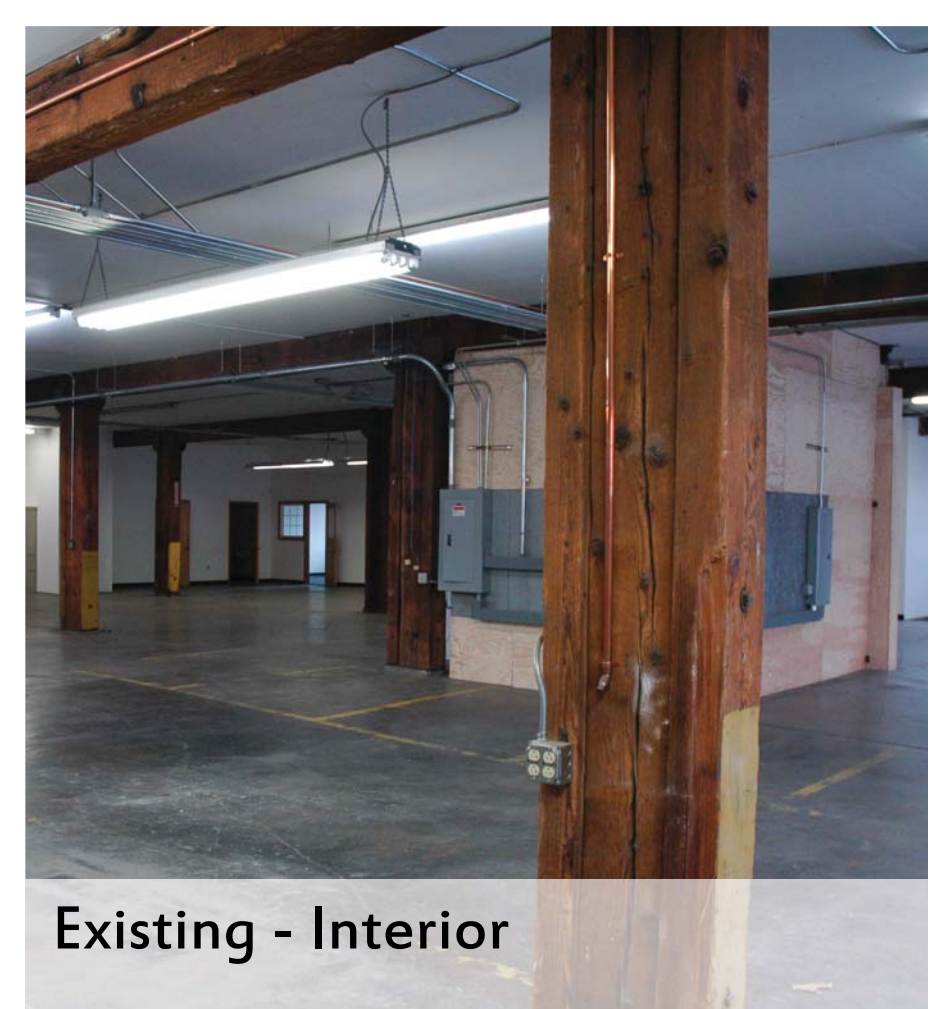
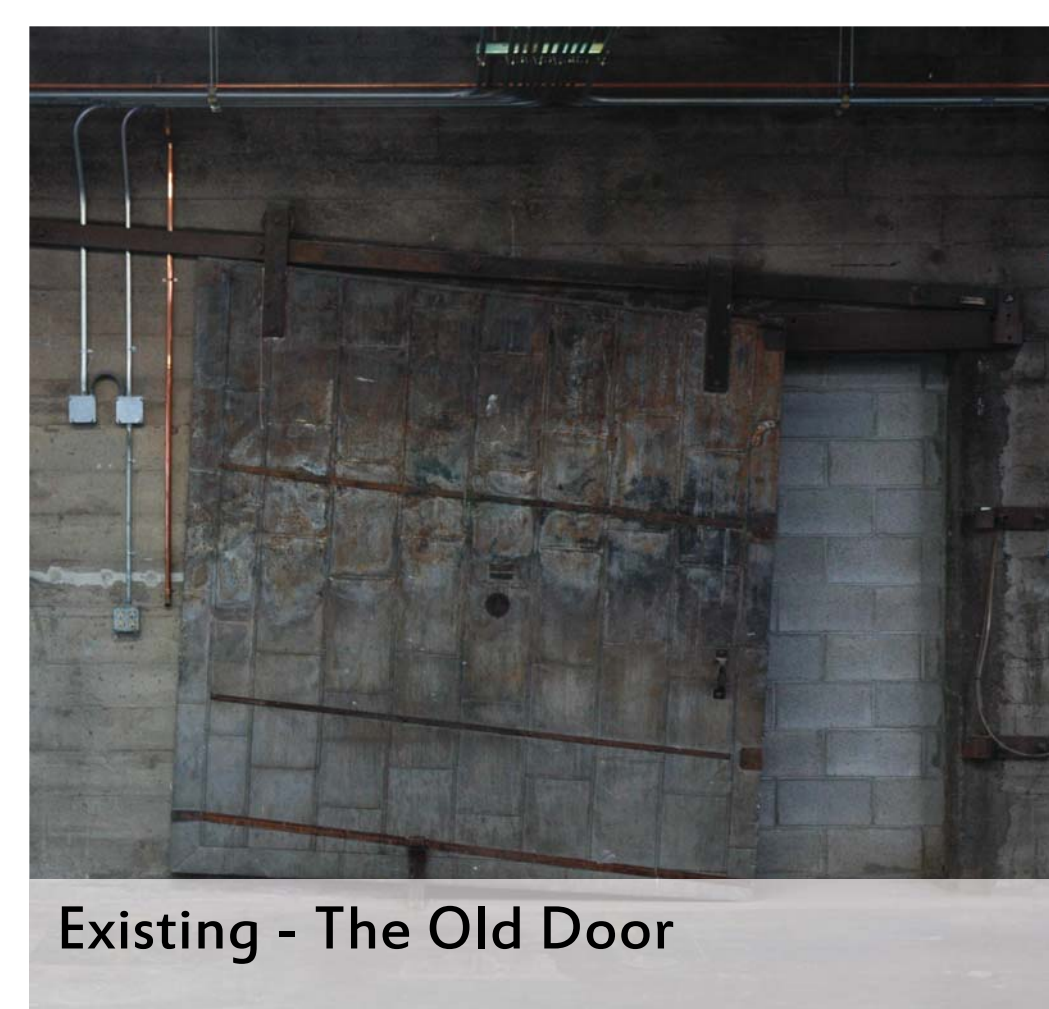
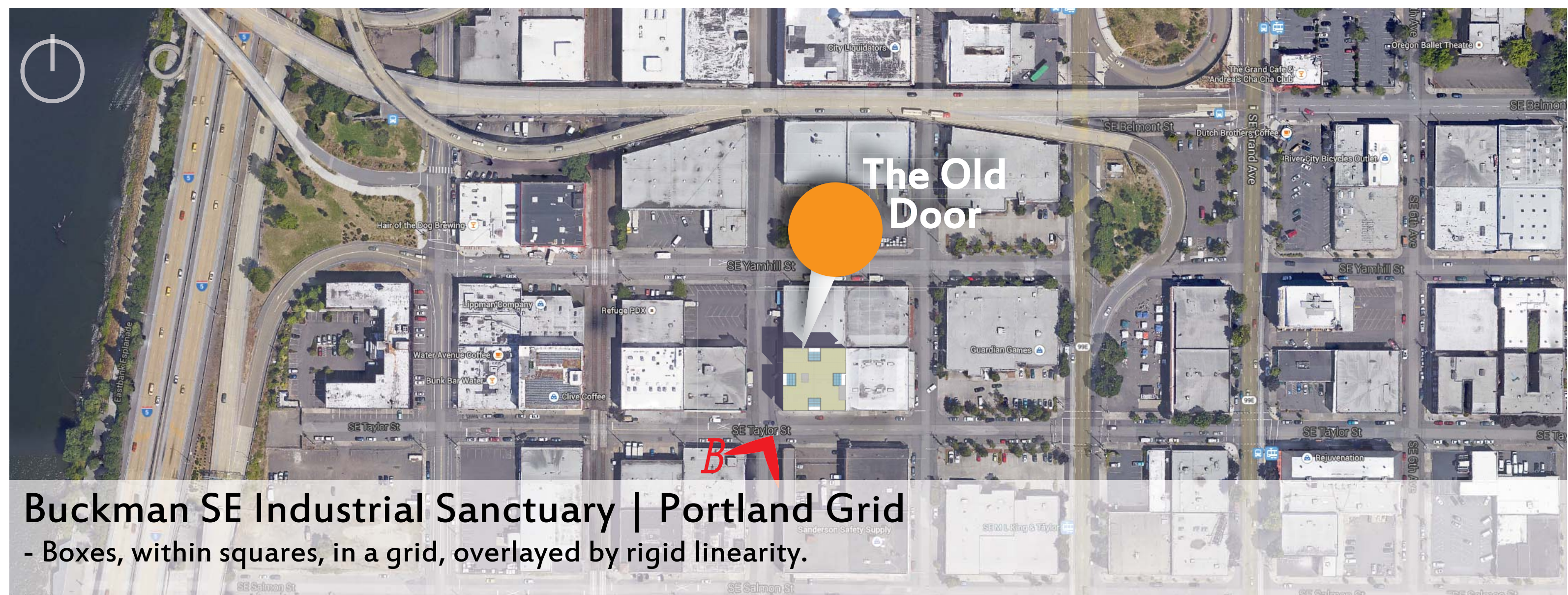


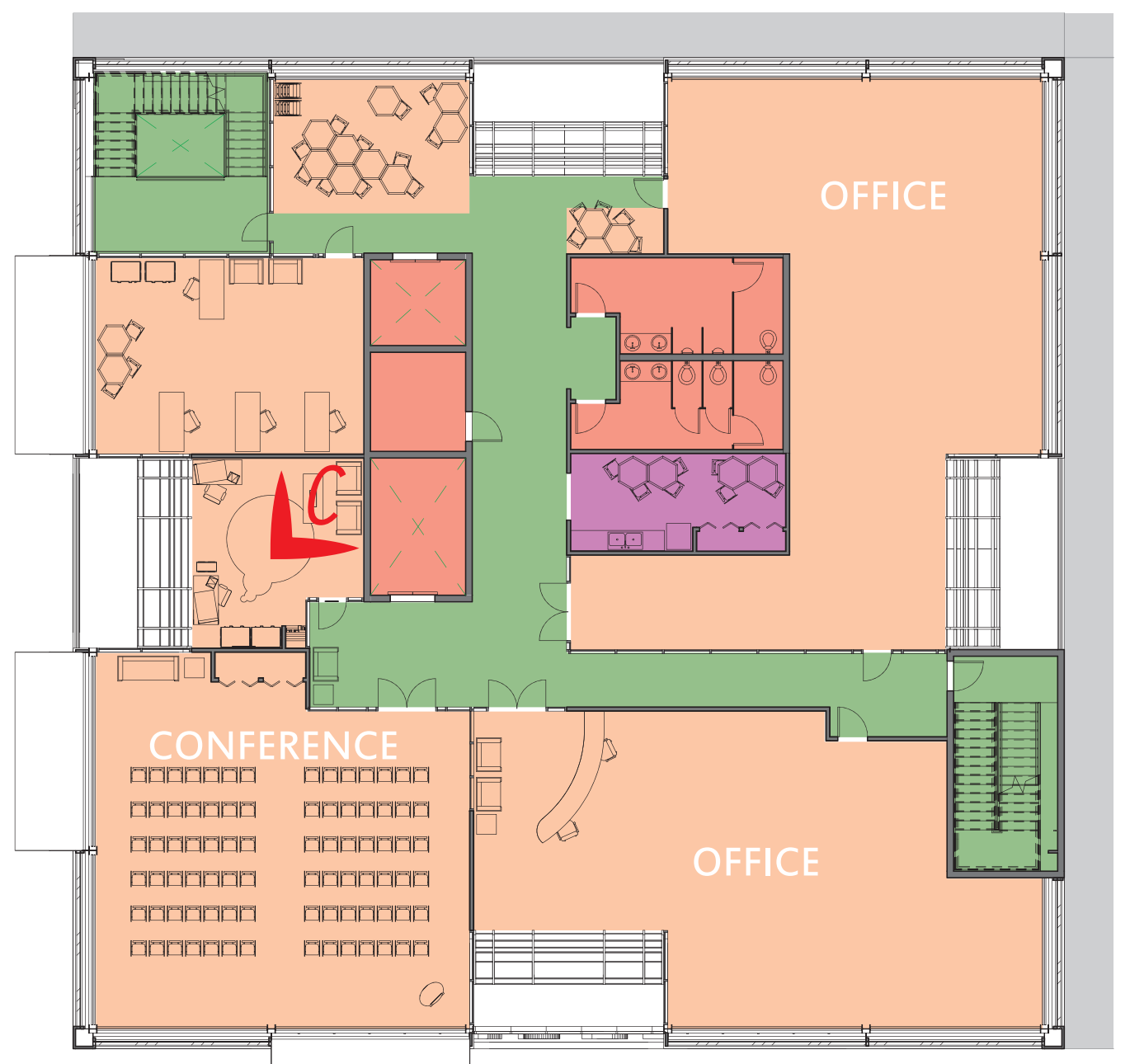
**Fifth Floor Plan - 1/16" | Challenges**  
 - Equalization of employee interaction.  
 - Window wedges compensate for future daylight issues from adjacent building development.



**Exterior Perspective | Southeast Second Street**  
 - Adaptively re-used base, with new light frame structure above and fully user-operable metal panels for air.



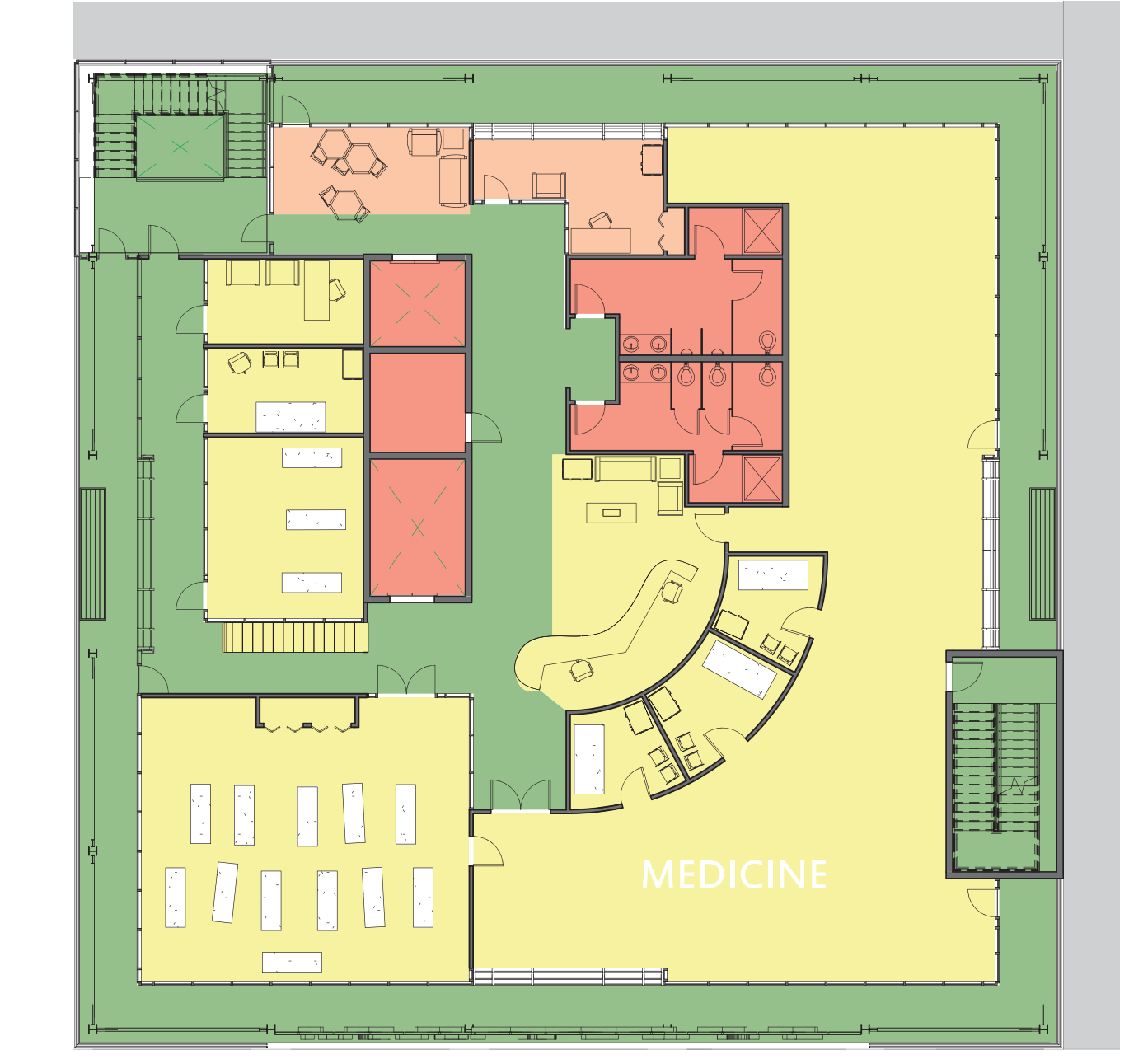
**Ground Floor Plan - 1/8" | Challenges**  
 - New interior wall partitions within the existing timber grid structure.  
 - New stair and elevator cores added for seismic strength and upper floor support.  
 - New entry ADA access.



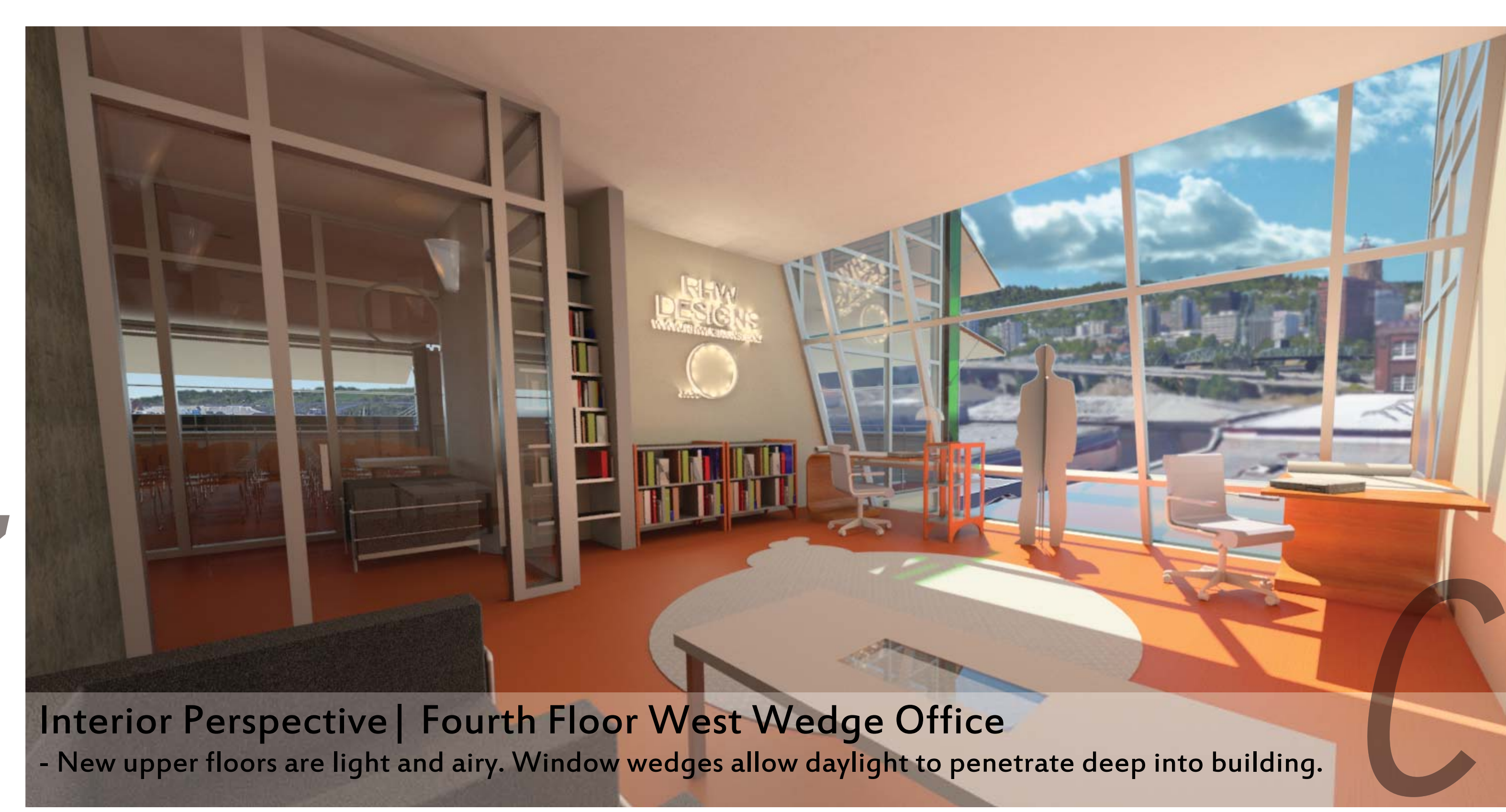
**Fourth Floor Plan - 1/16" | Challenges**  
 - Drawing in daylight.  
 - "MeetSPACE" at NW corners: Shared meeting and collaboration space free for public use - draws in patrons.



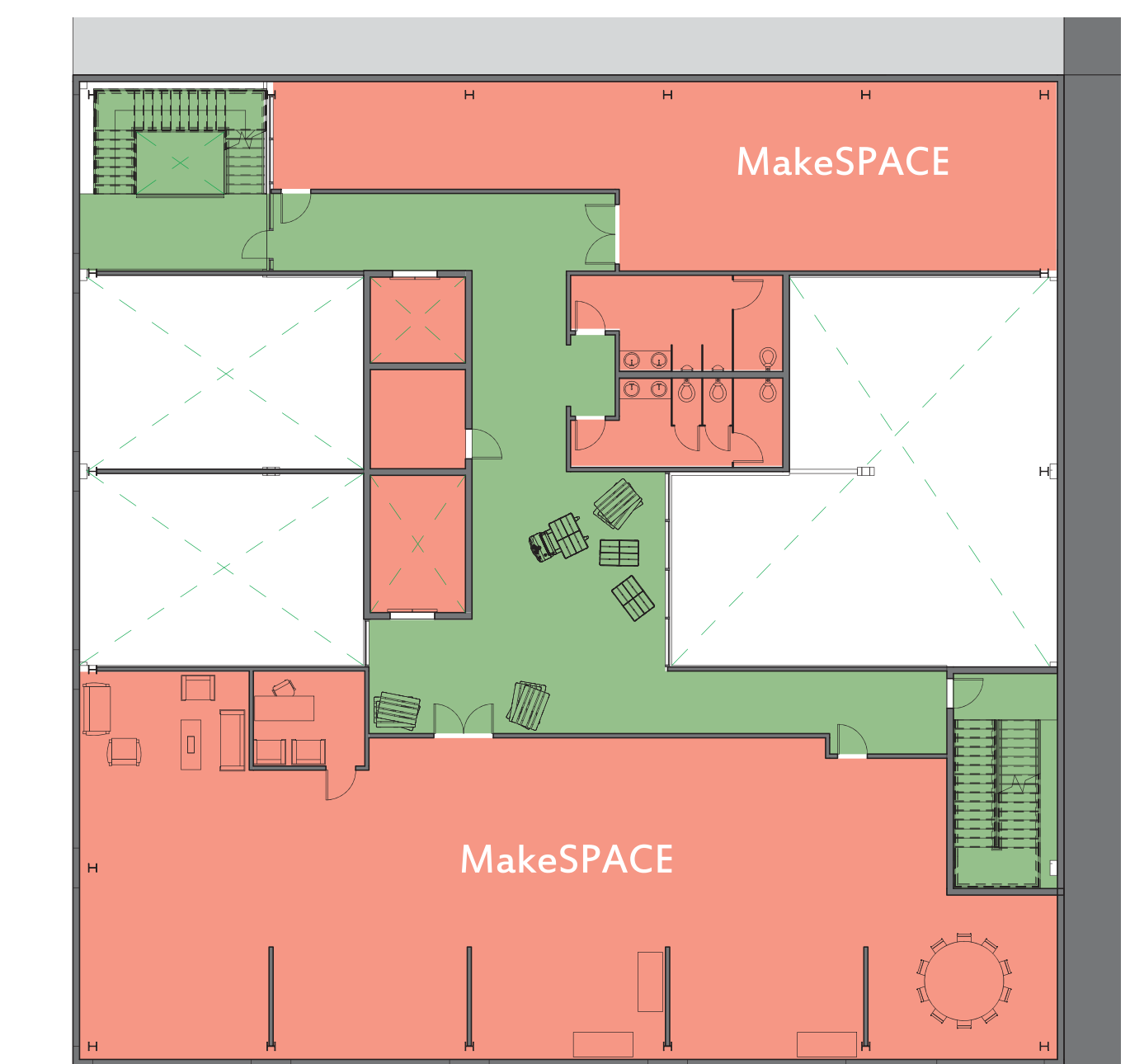
**Interior Perspective | Main Floor 3rd Space**  
 - Re-used interior timber columns and dock-level concrete slab with some saw-cut slab work.



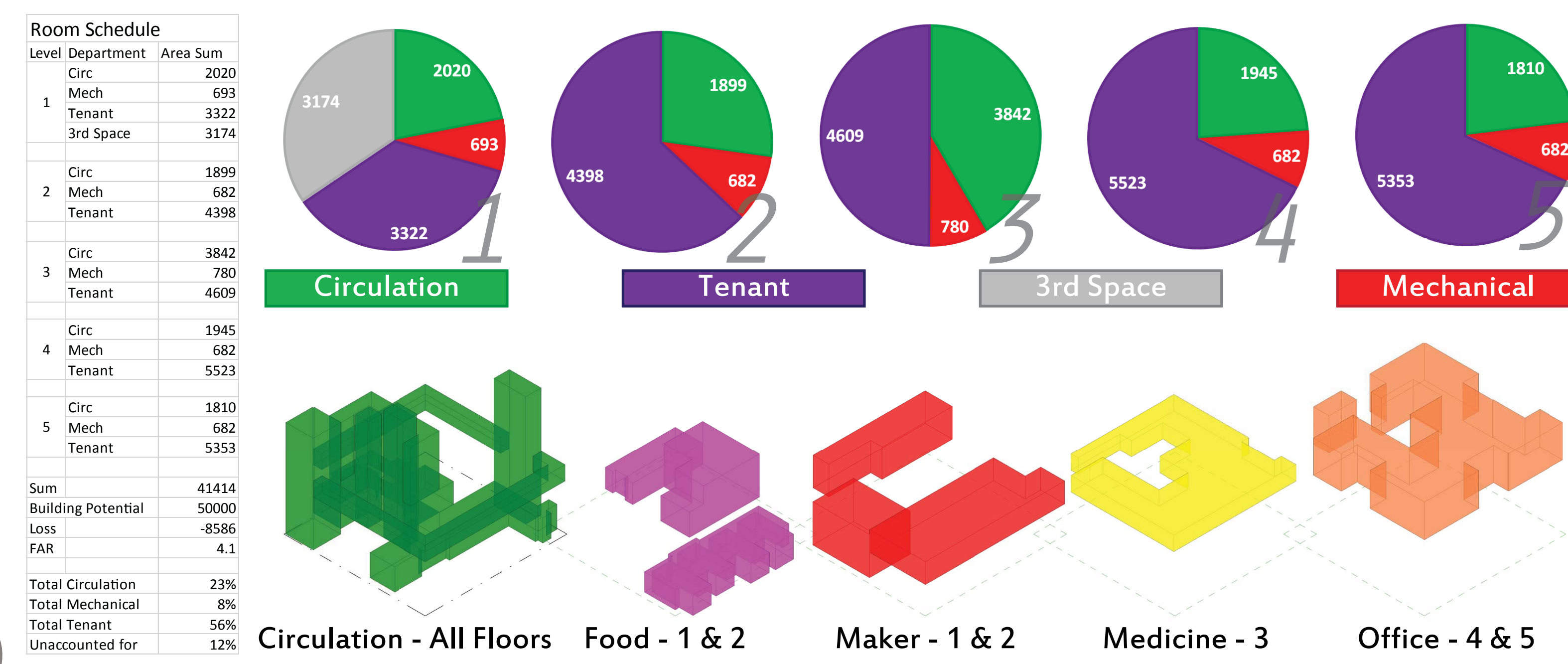
**Third Floor Plan - 1/16" | Challenges**  
 - Building above existing building, and interface.  
 - Spatial arrangement for medical healing tenant.  
 - Fresh-air balcony on third floor only.



**Interior Perspective | Fourth Floor West Wedge Office**  
 - New upper floors are light and airy. Window wedges allow daylight to penetrate deep into building.



**Second Floor Plan - 1/16" | Challenges**  
 - New durable concrete flooring for industrial use.  
 - Heavy duty machinery, high ceilings, and flexibility.



**Diagrammatic Program Spaces**  
 - Masses above share similar spaces to mitigate noise, smells, and the industrial processes so close to work places that require quiet.